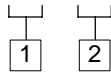


Power Supply Unit 24V DC, 10A Max. Output

EHA-PSU-704-A**-2*

Model Code

EHA-PSU-704-A ** - 20

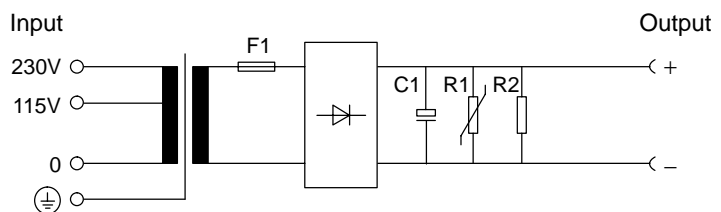


1 Outputs

3.5 = 3,5A
5.0 = 5,0A
10 = 10,0A

2 Design number

Circuit and Connections



Operating Data

Input	
Rated voltage	115/230V AC $\pm 5\%$
Rated frequency	50/60 Hz
Screw-on terminal connections	Max. 4,0 mm ² (0.006 in ²)
Output	
At rated input voltage U _a to DIN 19240	24V DC
Ripple, peak-to-peak	<5%
Screw-on terminal connections	Max. 4,0 mm ² (0.006 in ²)
Output current	Model A3.5 A5.0 A10
Fuse	3,5A 5,0A 10A
Mass	6,3 AT 8 AT 20 AT
	2,2 kg 3 kg 5,5 kg
	(4.85 lb) (6.61 lb) (12.13 lb)
Protection	IEC 364-4-41 or HD 384.04.41 (KDE 0100, Part 410)
Transformer to	VDE 0551/EN 60742/IEC 742
Temperature range	-20°C to +60°C (-4°F to +140°F)
Mounting attitude	Optional



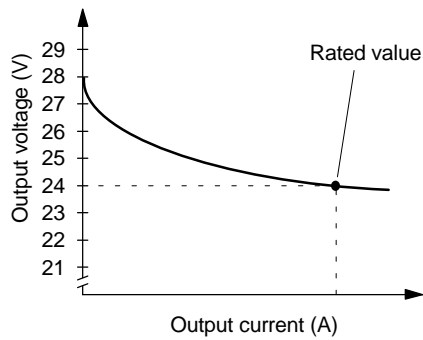
Warning: Electromagnetic Compatibility (EMC)

The European Community directives for electromagnetic compatibility (EMC) do not apply to this product.

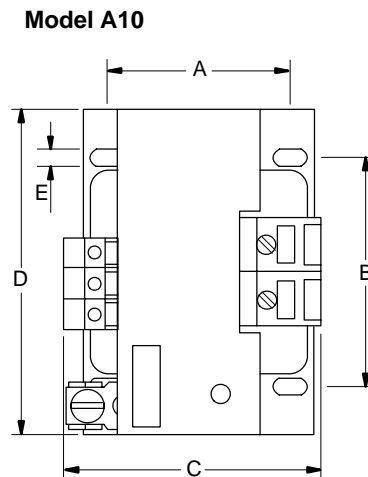
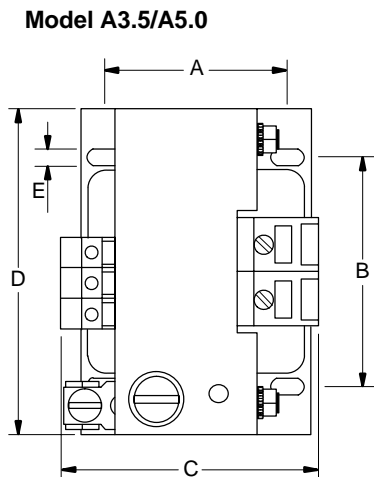
Output Voltage/Load Current

Primary voltage 115/230V AC

Ambient temperature 22°C (72°F)



Installation Dimensions in mm (inches)



Model

	A	B	C	D	E	Overall dimensions
A3.5	59,0 (2.32)	64,0 (2.51)	87,0 (3.43)	84,0 (3.31)	4,8 (0.19)	120 (4.72)
A5.0	75,5 (2.97)	84,0 (3.31)	91,5 (3.60)	96,0 (3.78)	5,8 (0.23)	144 (5.67)
A10	86,5 (3.40)	90,0 (3.54)	105,0 (4.13)	120,0 (4.72)	5,8 (0.23)	170 (6.69)